



WORKFORCE INVESTMENT BOARD
260 N. San Antonio Road, Suite C • Santa Barbara, CA 93110
(805) 681-4453 • FAX (805) 681-4656
www.SantaBarbaraCountyWIB.org

NEWS RELEASE
FOR IMMEDIATE RELEASE
DSS/WIB 8-16-1-9
DATE: **August 16, 2013**

News Media Contact:
Raymond L. McDonald, Executive Director
(805) 681- 4453
Karen L. Le Doux, Program Coordinator
(805) 681- 4760

PRESS RELEASE

Unemployment Rate in Santa Barbara County Increases to 6.7 Percent for the Month of July 2013

The unemployment rate for Santa Barbara County increased to 6.7 percent in July 2013, according to figures released today by the State Employment Development Department (EDD). This is up from a revised 6.3 percent in June 2013, and below the year-ago estimate of 8.1 percent. This is compared to an unadjusted unemployment rate for California of 9.3 percent and 7.7 percent for the nation during the same period.

Industry sectors in Santa Barbara experienced a significant loss of 3,900 jobs for the month of July. The industry with the most significant loss (for the second month in a row) was Government, which trimmed 2,800 jobs. Other sectors that saw a decrease in the number of jobs included: Construction, and Educational and Health Services with 100 jobs each. In contrast, Professional and Business Services gained 300 positions, and Leisure and Hospitality increased by 100 jobs. Other sectors like Mining and Logging, Trade Transportation and Utilities, Information and Financial Activities remained unchanged.

Between July 2012 and July 2013, total employment in Santa Barbara County rose by 3,200 jobs or 1.7 percent. Some of the highlights for this period included:

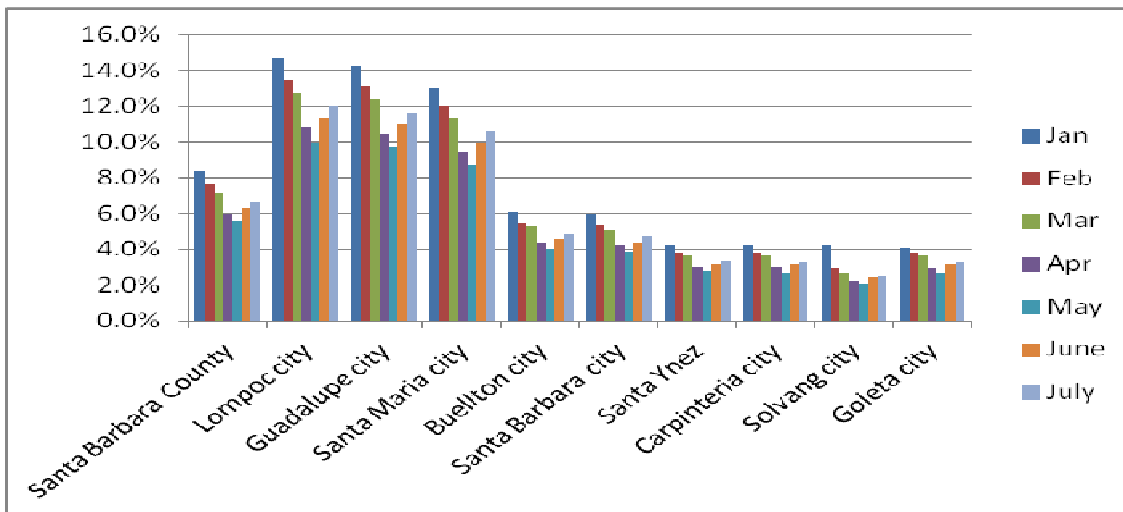
- Industries posting substantial gains over the year included: Service providing—up 2.0% or 2,900 jobs; Private Service Providing—up 2.5% or 2,800 jobs; Professional & Business Services—up 8.8% or 2,200 positions.
- Other industries posting substantial gains over the year included: Health Care—500 jobs or 3.1%; Construction—500 jobs or 7.4%; Educational and Health Services—500 jobs or 2.3%; Health Care and Social Assistance—500 jobs or 2.6%; State and Local Government—500 jobs or 1.5%; Food and Beverage Stores—200 jobs or 4.3%; Arts, Entertainment and Recreation—200 jobs or 6.3%; Local Government Excluding Education—200 jobs or 1.9%; Information—200 jobs or 4.9%.
- Industries that lost jobs for this period of time included: Retail Trade—minus 400 jobs; Accommodation—minus 300 jobs and Manufacturing—minus 200 jobs.

Santa Barbara County Workforce Investment Board (WIB) Director, Raymond L. McDonald stated that “overall, the fluctuation in our labor market at this time of year is not as critical—if we take into account the tremendous improvement we have made since last year. During this period, we have seen a reassuring increase and growth in critical areas of our local economy. Those industries showing reliable increase are Construction, Professional & Business Services, and Education and Health Services.”

Mr. McDonald added “currently, the government employment is being severely stressed. This is in part because of the federally-imposed sequestration, which has affected many government programs. The majority of the financial impact, however, will be felt at the beginning of the new fiscal year (July thru September). There is a good probability that towards the end of the 2013 calendar year we will start to see some recovery from the sequestration shock.”

In our local cities, the City of Lompoc remains at the top of the list with an unemployment rate of 12.0%. Lompoc is followed by Guadalupe with 11.6% and Santa Maria with 10.6%.

2013	Jan	Feb	Mar	Apr	May	June	July
Santa Barbara County	8.4%	7.7%	7.2%	6.0%	5.6%	6.3%	6.7%
Lompoc city	14.7%	13.5%	12.8%	10.8%	10.0%	11.3%	12.0%
Guadalupe city	14.2%	13.1%	12.4%	10.4%	9.7%	11.0%	11.6%
Santa Maria city	13.0%	12.0%	11.3%	9.5%	8.8%	10.0%	10.6%
Buellton city	6.1%	5.5%	5.3%	4.4%	4.0%	4.6%	4.9%
Santa Barbara city	5.9%	5.4%	5.1%	4.2%	3.9%	4.4%	4.7%
Santa Ynez	4.2%	3.8%	3.6%	3.0%	2.8%	3.2%	3.4%
Carpinteria city	4.2%	3.8%	3.6%	3.0%	2.7%	3.1%	3.3%
Solvang city	4.2%	2.9%	2.7%	2.2%	2.1%	2.4%	2.5%
Goleta city	4.1%	3.8%	3.6%	2.9%	2.7%	3.1%	3.3%



ABOUT THE WORKFORCE INVESTMENT BOARD OF Santa Barbara COUNTY

The Workforce Investment Board, www.SantaBarbaraCountyWIB.org, is dedicated to serving the workforce needs of businesses, adults, laid-off workers and youth throughout Santa Barbara County. The WIB is a public/private partnership created by the Federal Workforce Investment Act (WIA) and is staffed by the County of Santa Barbara.

Job seekers and employers can take advantage of free services at two Workforce Resource Centers (“One-Stops”) to help find work or new employees. Programs include employment services for job seekers, the latest labor market information and regional workforce research for businesses, as well as training that specialize in helping people gain the skills and confidence necessary to find and obtain a job. The One-Stop Shops are at 1410 S. Broadway in Santa Maria, (805) 614-1550, and 130 E. Ortega Street in Santa Barbara, (805) 568-1296. Online information is available at www.workforceresource.com.

Santa Barbara County Industry Clusters of Opportunity (designated by WIB):

- Healthcare
- Energy and Environment
- Building and Design
- Technology and Innovation
- Business Support Services
- Agriculture, Tourism, and Wineries

For more information please go to: www.SantaBarbaraCountyWIB.org or to www.labormarketinfo.edd.ca.gov for the full statewide unemployment figures.